

Environmental and Social Monitoring First Report

Project Number: 48368-001
August 2017

MYA: Myingyan Natural Gas Power Project Part 2

Prepared by Environ Myanmar Co Ltd.

The environment and social monitoring report is a document of the borrower. The views expressed herein do not necessarily represent those of ADB's Board of Directors, Management, or staff, and may be preliminary in nature. Your attention is directed to the "Terms of Use" section of this website.

In preparing any country program or strategy, financing any project, or by making any designation of or reference to a particular territory or geographic area in this document, the Asian Development Bank does not intend to make any judgments as to the legal or other status of any territory or area.

APPENDIX 4 SITE VISIT PHOTO LOG

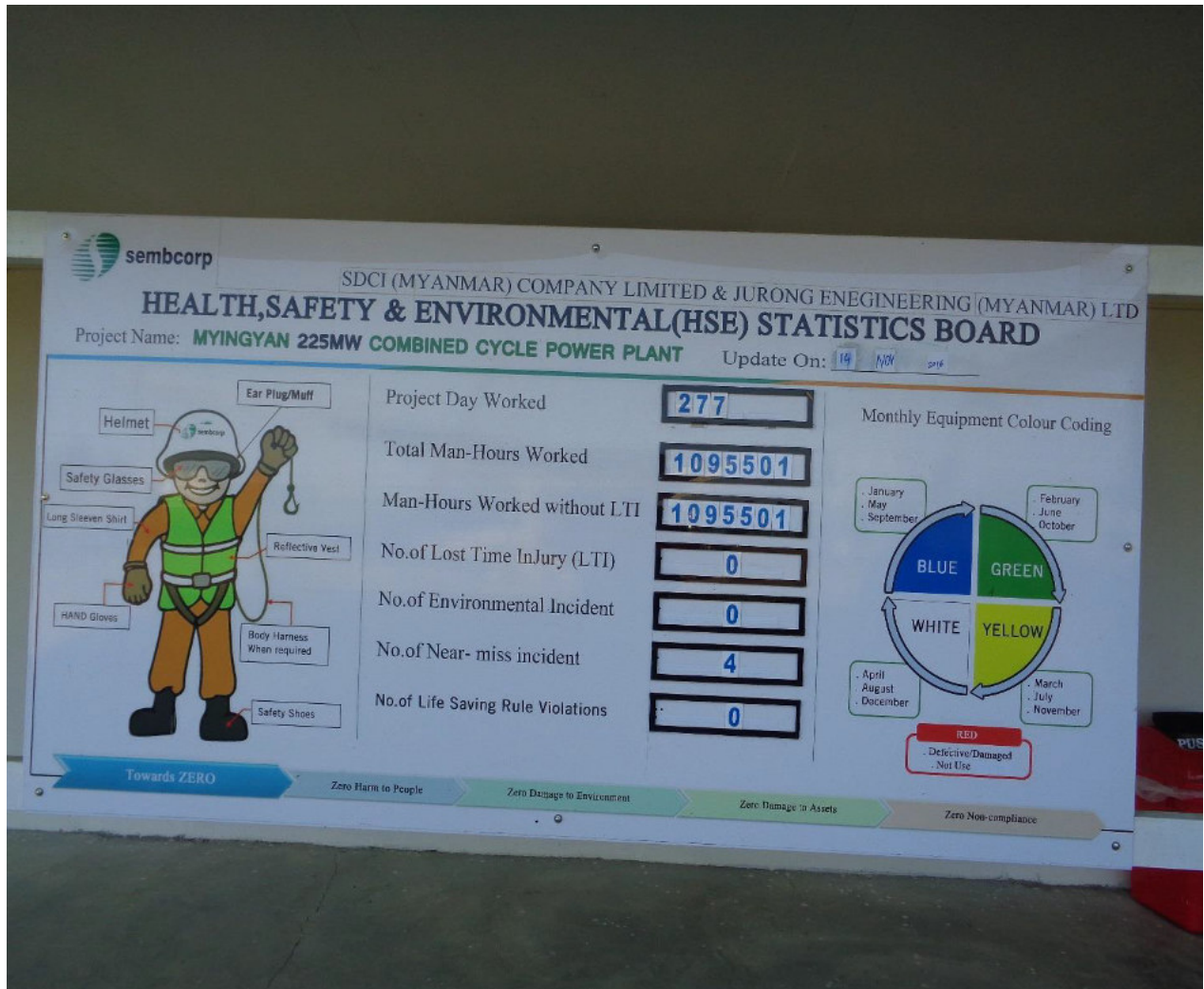


Photo No. 1. HSE Sign at the Myingyan 226 MW Gas fired Combined Cycle Project site (November 2016)



Photo No. 2. Grievance Mechanism suggestion box in front of the Semcorp office at the Project site



Photo No. 3. Offices and new trees planted at the Project site



Photo No. 4. Waste Management at the Project site



Photo No. 5. Contractor (Min Dhama) project office at the Project Construction site



Photo No. 6. Sign at the fuel storage, as part of safety reminder, at the Project site



Photo No. 7. Strict reminder to wear PPE at the construction areas within the Project site



Photo No. 8. Safety reminders to workers outside the Min Dhama office at the Project site



Photo No. 9. Daily log of Min Dhama Health & Safety incidents (zero to date) at the Project site.

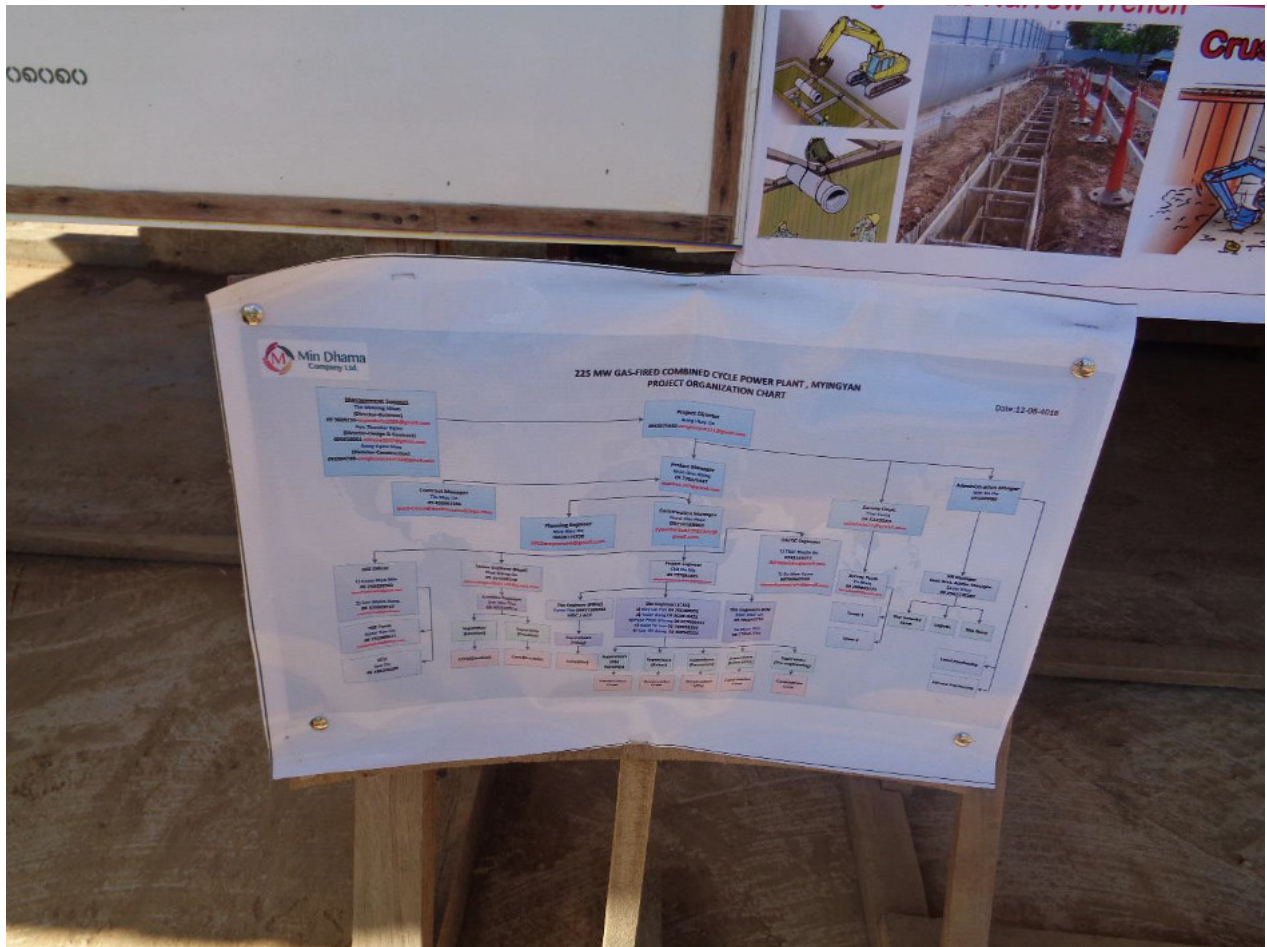


Photo No. 10. Organization Chart of Min Dhama Subcontractor at their Project office



Photo No. 11. At the Project construction site, everyone is wearing proper PPE



Photo No. 12. First Aid station at the Project construction site



Photo No. 13. Workers rest area, Water drinking area, First Aid station at the Project construction site. The rest area is particularly beneficial to the workers during the summer months.



Photo No. 14. Another workers rest area at the Project construction site



Photo No. 15. Workers accommodation camp for Min Dhamma workers (and families)



Photo No. 16. Recreation areas at the Min Dhama workers' accommodation camp



Photo No. 17. Womens skilled labor accommodations at the Min Dhama workers' accommodation camp



Photo No. 18. Dining area for Min Dhama workers at their workers' accommodation camp



Photo No. 19. Worker's family that is living at the Min Dhama workers' accommodation camp



Photo No. 20. Water storage concrete tank for domestic use at the Min Dhama workers' accommodation camp



Photo No. 21. Domestic (sanitary) wastewater discharges into the adjoining farm land from the Min Dhama workers' accommodation camp. This was addressed and corrected by the Project immediately after this was noted during the inspection.



Photo No. 22. Fuel storage for the genset at the Min Dhama workers' accommodation camp. Needs improvement on the containment in case of leak or spills.



Photo No. 23. Emergency contact numbers at the Bedok workers' accommodation camp outside of the Project site.



Photo No. 24. Sleeping area at the Bedok workers' accommodation camp, which is not in compliance with Lenders' standards.



Photo No. 25. Workers relaxing and watching TV in a sleeping area at the Bedok workers' accommodation camp.



Photo No. 26. Outdoor bathing facility at the Bedok workers' accommodation camp



Photo No. 27. Shop at the Bedok workers' accommodation camp



Photo No. 28. Dining area at the Jurong workers' accommodation camp



Photo No. 29. Womens skilled labor accommodations at the Jurong workers' accommodation camp



Photo No. 30. Private jetty at Nyaung Hla along the Ayeyarwaddy River. The jetty will be used to receive materials and supplies for the Project.



Photo No. 31. Other users of the jetty when not in use by the Project or the jetty owner.



Photo No. 32. Villagers along the water supply pipeline route where farming and pasturing are the common means of livelihood.



Photo No. 33. Along the access road to the Project site from the area where the water supply pipeline will be installed. Migratory birds and resident birds drink and feed in this area away from the village.



Photo No. 34. Young women we interviewed at a shop in Ayeywar along the water supply pipeline route